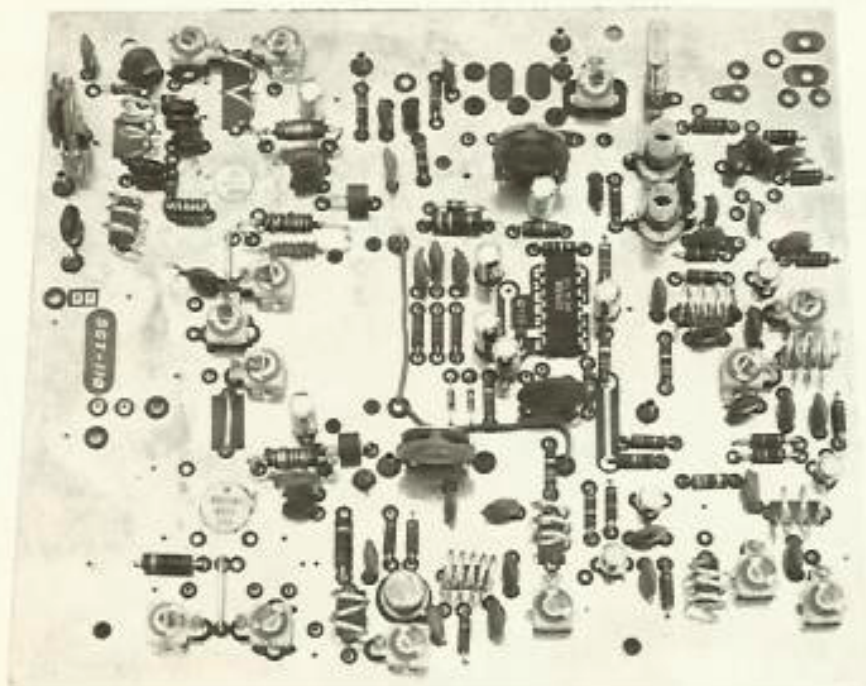


SCT 110

VHF TRANSMITTER/AMP BOARDS - OR COMPLETE ASSEMBLY!

SCT110



BA-10 30WT.
AMP BOARD



COMPLETE SHIELDED
TRANSMITTER
ASSEMBLY



IDEAL FOR:

REPEATERS

RADIO LINKS

TRANSCEIVERS

OTHER SPECIAL

PURPOSE APPLICATIONS!

*Assembly Also Available
Mounted To 19" Rack Panel*

The SCT110 Transmitter Board is a completely self-contained 10 watt VHF FM Transmitter. The design embodies years of experience in transmitter design and was specifically developed to be the ultimate in Repeater Exciter Units. The board includes Audio Amplifier/Clipper-Filter, Oscillator, FM Modulator, Multiplier, Driver and Final Amplifier stages all on one double-sided G-10 military quality board, along with DC Switching, and Voltage Regulator Circuitry. The unit is completely Solid State and "State of the Art". It has been carefully designed to be extremely low in Broadband "White Noise" and other spurious emissions. Multiplication of the Crystal Frequency is kept to a minimum in order to keep these emissions as low as possible. The entire top side of the PC Board is copper "Ground Plane" which provides excellent grounds for all of the various stages and a measure of shielding for the signal traces on the other side of the board. This makes for the ultimate in transmitter stability and optimum overall performance even over wide temperature ranges. The FM Modulator has been designed for lowest possible modulation distortion and maximum fidelity. The "On The Air" sound of the transmitter is **excellent** in quality. So much so, that with a low distortion receiver, the **re-transmitted** audio sounds like direct copy. Pre-emphasis is 6dB per octave, per EIA specs. The transmitter is supplied in a single channel configuration, but may be modified for operation on up to 3 crystal controlled frequencies.

The BA10 VHF Final Amplifier board was designed to be directly driven by the SCT110 Exciter unit. It is similar to the SCT110 in quality construction, and will deliver 30 watts of RF output power. A very rugged and efficient emitter ballasted transistor is used, and it should provide many years of reliable service. The BA10 will operate at 100% continuous duty cycle when mounted in our custom housing, or with our recommended heat sinking - aluminum housing, plus finned heat sink (supplied). A triple-section Low Pass Filter is "built-in", along with a Relative Power Output Sensor circuit (which can be used to drive a front-panel indicator meter).

**THE SHIELDED TRANSMITTER/HOUSING ASSEMBLY
IS EXACTLY AS USED IN THE SCR1000 REPEATER**



SPECTRUM COMMUNICATIONS CORP.

'Specialists in Repeater Systems'

1055 W. GERMANTOWN PIKE NORRISTOWN, PA. 19401 215-631-1710